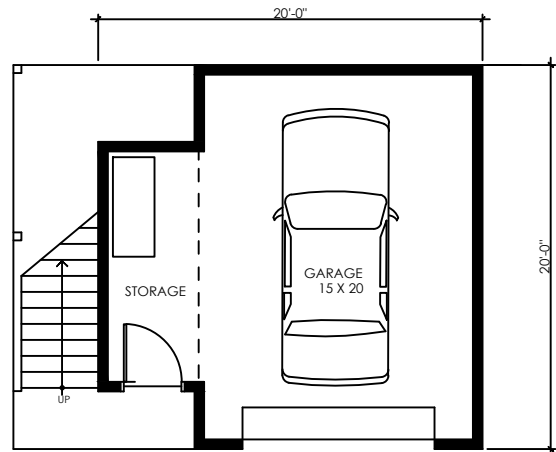
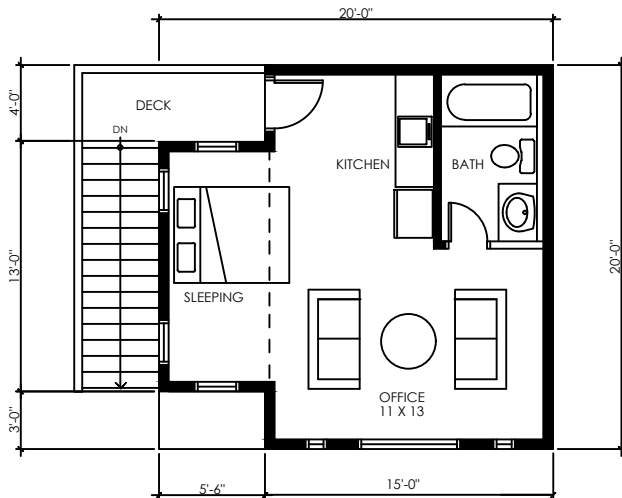
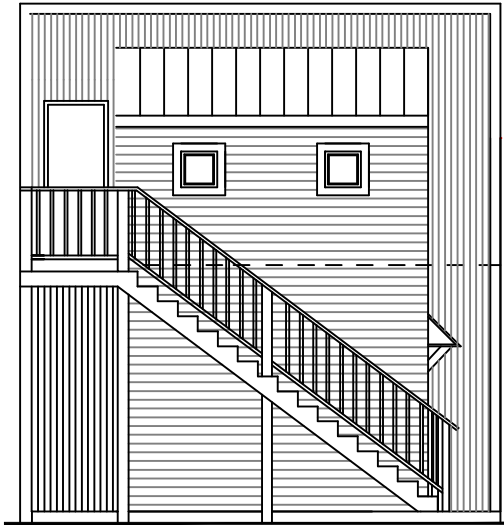


FIRESKY

GARAGE & STUDIO

GARAGE: 365 sq ft

STUDIO: 365 sq ft



ONE-STORY HOUSE WITH OPEN KITCHEN/LIVING
DINING SPACE WITH VAULTED CEILING AND
TRANSOM WINDOWS

HOUSE DATA

SQUARE FOOTAGE: 730 SF

BEDROOMS: 1

BATHROOMS: 1

OPTIONS

WINDOWS

EXTERIOR MATERIALS

EXTERIOR COLORS

PASSIVE SOLAR CONTROL

ALL RIGHTS RESERVED ON ALL MATERIAL, FLOOR PLANS
AND RENDERINGS CONTAINED THEREIN, AND ON ALL
MATERIAL PRODUCED BY FIRESKY MODERN RURAL
HOUSES, INCLUDING THE RIGHT OF REPRODUCTION OR
USE, IN WHOLE OR IN PART, IN ANY FORM OF ANY FLOOR
PLAN OR HOUSE DESIGN WITHOUT THE PRIOR WRITTEN
PERMISSION OF FIRESKY MODERN RURAL HOUSES,