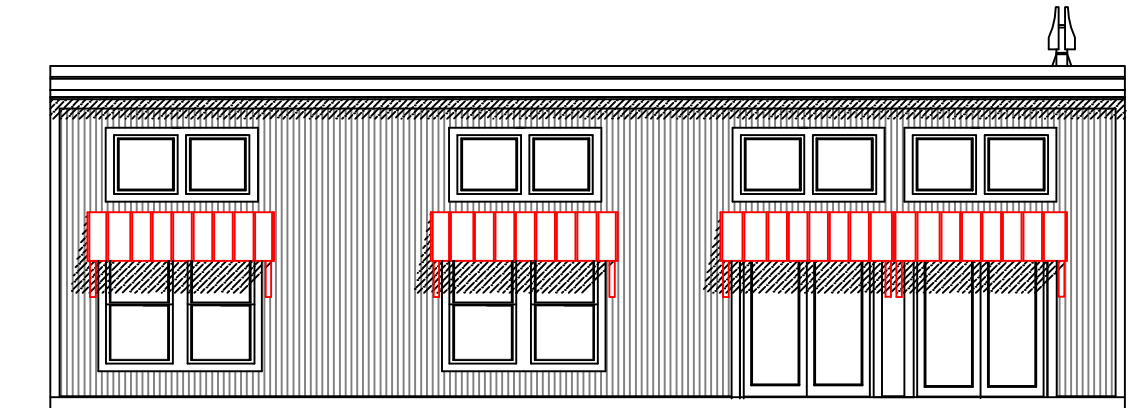
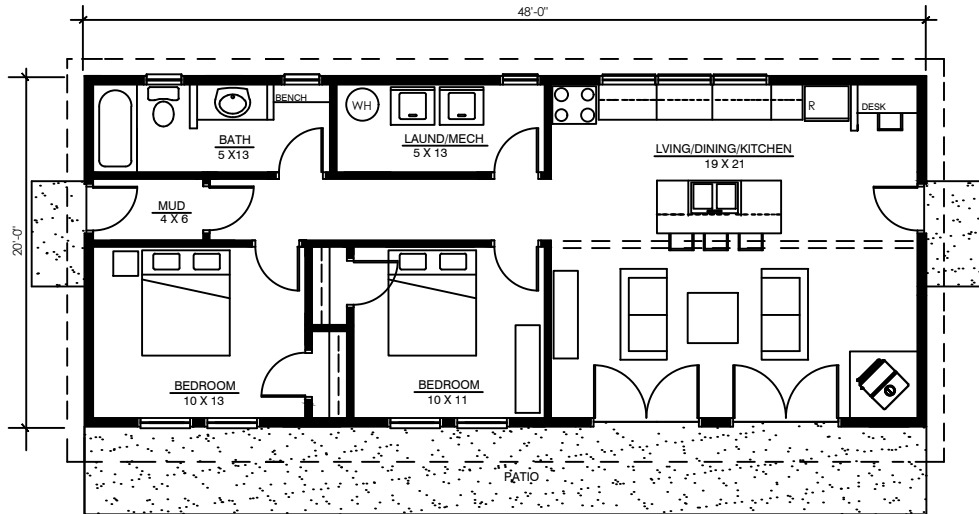
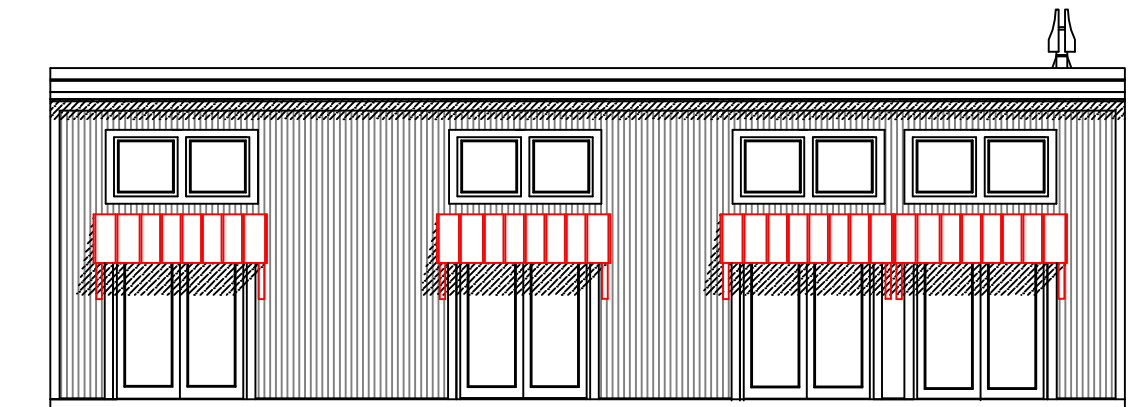


FIRESKY

FLORENCE HOUSE 960 sq ft



ALTERNATE



BASE

HOUSE DATA

SQUARE FOOTAGE: 960 SF

BEDROOMS: 2

BATHROOMS: 1

OPTIONS

WINDOWS

EXTERIOR MATERIALS

EXTERIOR COLORS

PASSIVE SOLAR CONTROL

ONE-STORY HOUSE WITH OPEN KITCHEN/LIVING
DINING SPACE WITH VAULTED CEILING AND
TRANSOM WINDOWS

ALL RIGHTS RESERVED ON ALL MATERIAL, FLOOR PLANS
AND RENDERINGS CONTAINED THEREIN, AND ON ALL
MATERIAL PRODUCED BY FIRESKY MODERN RURAL
HOUSES, INCLUDING THE RIGHT OF REPRODUCTION OR
USE, IN WHOLE OR IN PART, IN ANY FORM OF ANY FLOOR
PLAN OR HOUSE DESIGN WITHOUT THE PRIOR WRITTEN
PERMISSION OF FIRESKY MODERN RURAL HOUSES,