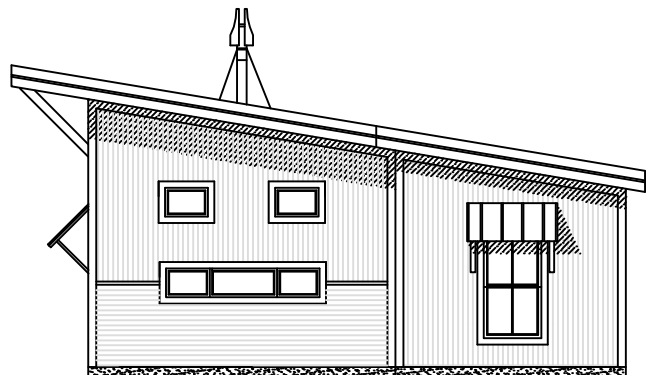
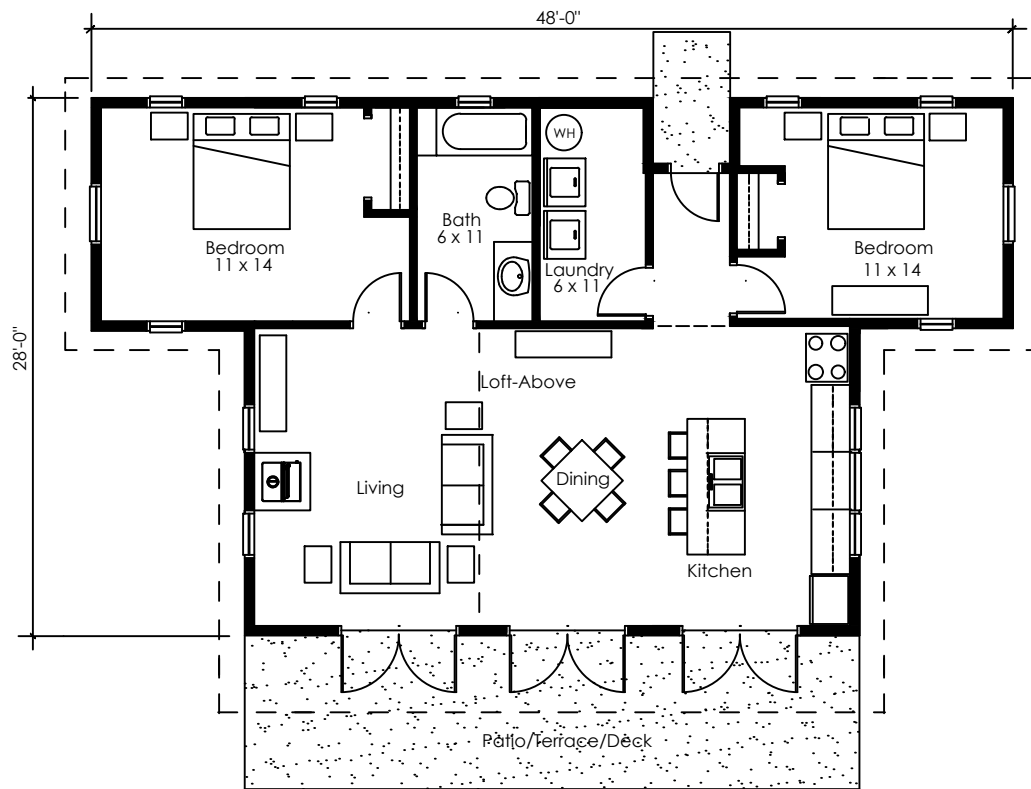


# FIRESKY

## FOX CREEK HOUSE 1088 sq ft



ONE-STORY HOUSE WITH OPEN KITCHEN/LIVING DINING SPACE WITH VAULTED CEILING AND TRANSOM WINDOWS

HOUSE DATA  
SQUARE FOOTAGE: 1088 SF  
BEDROOMS: 2  
BATHROOMS: 1

OPTIONS  
WINDOWS  
EXTERIOR MATERIALS  
EXTERIOR COLORS  
SIDE SCREEN PORCH  
SLEEPING LOFT

PASSIVE SOLAR CONTROL

ALL RIGHTS RESERVED ON ALL MATERIAL, FLOOR PLANS AND RENDERINGS CONTAINED THEREIN, AND ON ALL MATERIAL PRODUCED BY FIRESKY MODERN RURAL HOUSES, INCLUDING THE RIGHT OF REPRODUCTION OR USE, IN WHOLE OR IN PART, IN ANY FORM OF ANY FLOOR PLAN OR HOUSE DESIGN WITHOUT THE PRIOR WRITTEN PERMISSION OF FIRESKY MODERN RURAL HOUSES,