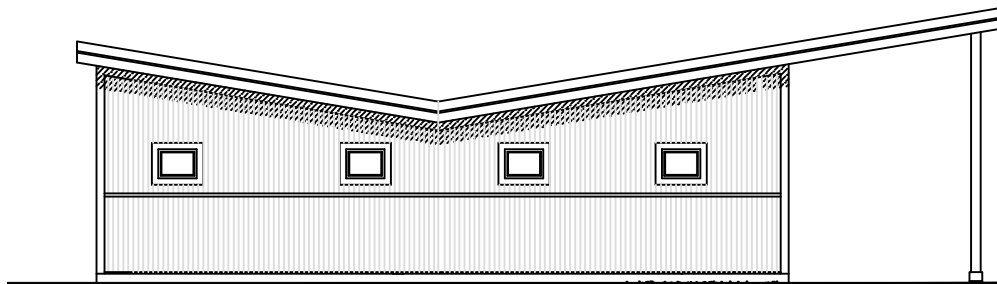
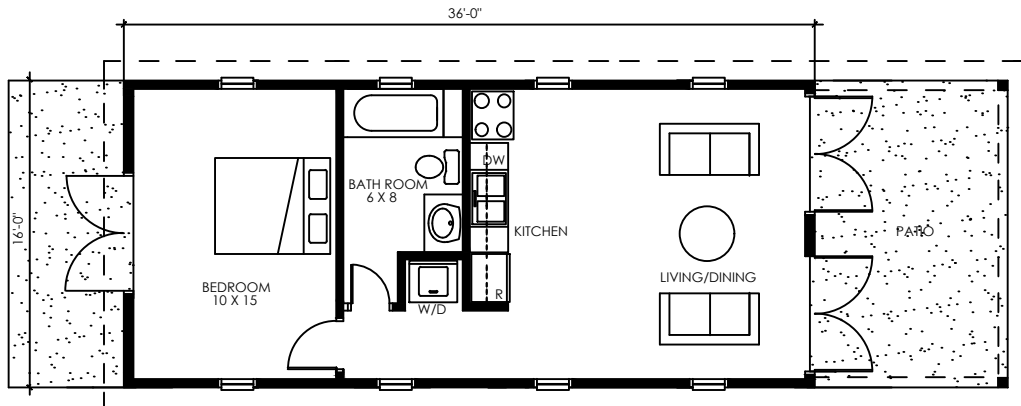
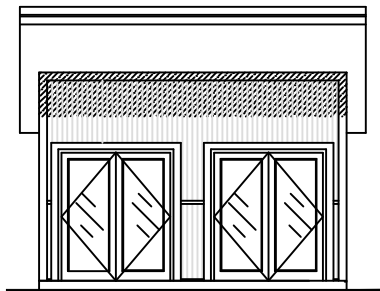


FIRESKY

NEWTON HOUSE 576 sq ft

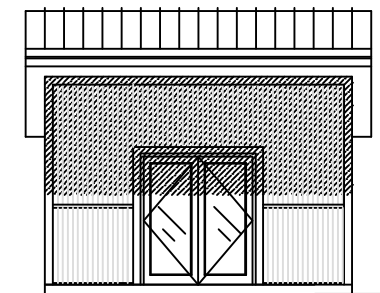


ONE-STORY HOUSE WITH OPEN KITCHEN/LIVING
DINING SPACE WITH VAULTED CEILING



HOUSE DATA
SQUARE FOOTAGE: 576 SF
BEDROOMS: 1
BATHROOMS: 1
OPTIONS
WINDOWS
EXTERIOR MATERIALS
EXTERIOR COLORS

PASSIVE SOLAR CONTROL



ALL RIGHTS RESERVED ON ALL MATERIAL, FLOOR PLANS
AND RENDERINGS CONTAINED THEREIN, AND ON ALL
MATERIAL PRODUCED BY FIRE SKY MODERN RURAL
HOUSES, INCLUDING THE RIGHT OF REPRODUCTION OR
USE, IN WHOLE OR IN PART, IN ANY FORM OF ANY FLOOR
PLAN OR HOUSE DESIGN WITHOUT THE PRIOR WRITTEN
PERMISSION OF FIRE SKY MODERN RURAL HOUSES,