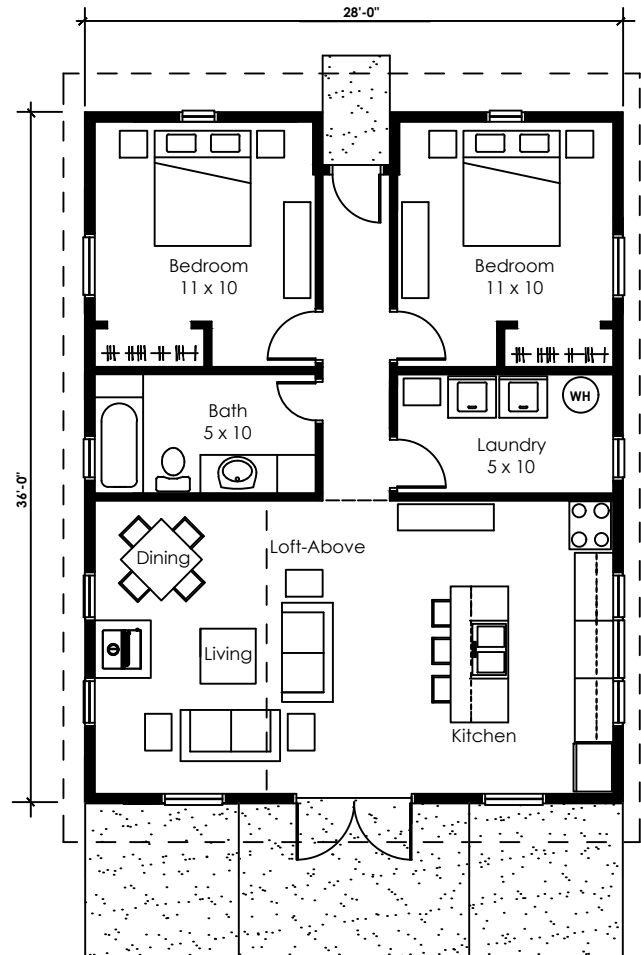
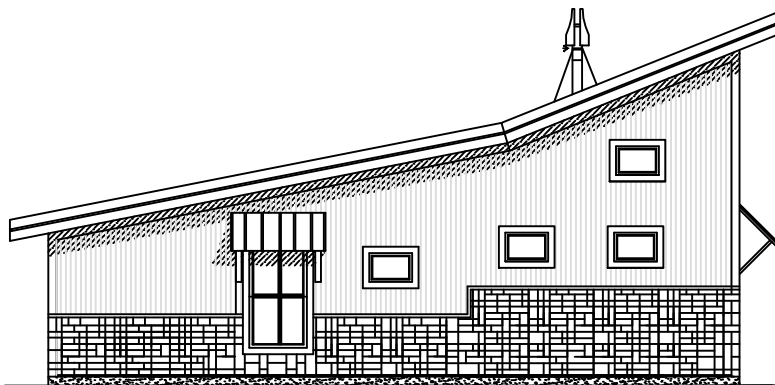
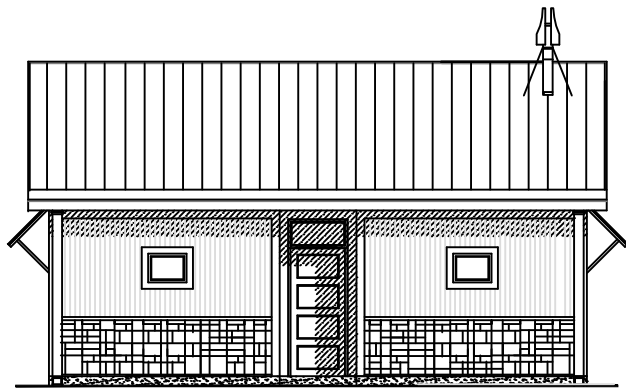


FIRESKY

SAFFORD HOUSE 1008 sq ft



ONE-STORY HOUSE WITH OPEN KITCHEN/LIVING DINING SPACE WITH VAULTED CEILING AND TRANSOM WINDOWS

HOUSE DATA
SQUARE FOOTAGE: 1008 SF
BEDROOMS: 2
BATHROOMS: 1

OPTIONS
WINDOWS
EXTERIOR MATERIALS
EXTERIOR COLORS
SIDE SCREEN PORCH
BASEMENT/WALK-OUT
SLEEPING LOFT

PASSIVE SOLAR CONTROL

ALL RIGHTS RESERVED ON ALL MATERIAL, FLOOR PLANS AND RENDERINGS CONTAINED THEREIN, AND ON ALL MATERIAL PRODUCED BY FIRESKY MODERN RURAL HOUSES, INCLUDING THE RIGHT OF REPRODUCTION OR USE, IN WHOLE OR IN PART, IN ANY FORM OF ANY FLOOR PLAN OR HOUSE DESIGN WITHOUT THE PRIOR WRITTEN PERMISSION OF FIRESKY MODERN RURAL HOUSES,