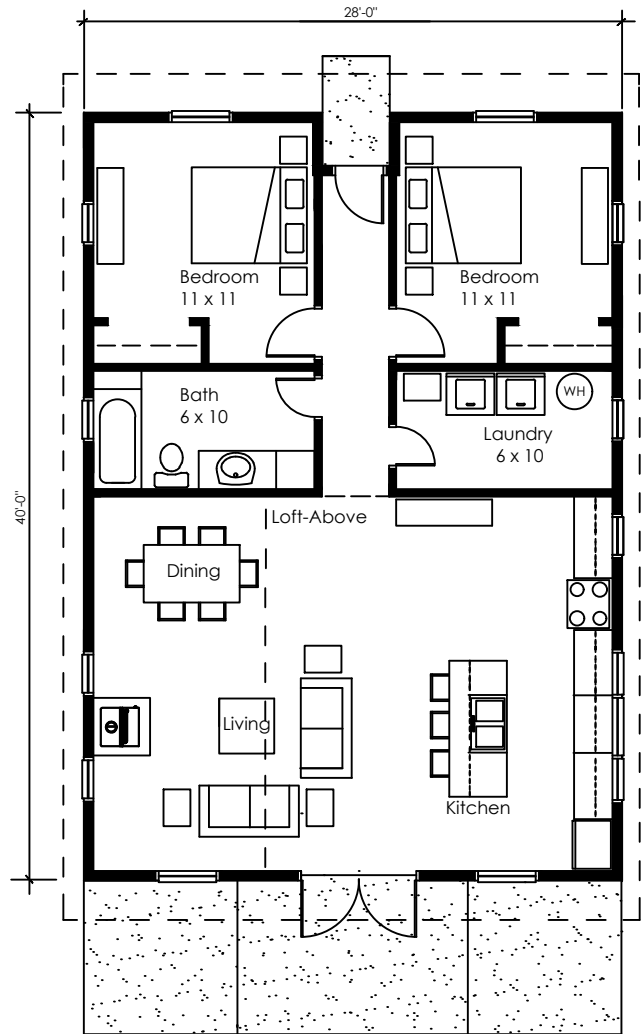
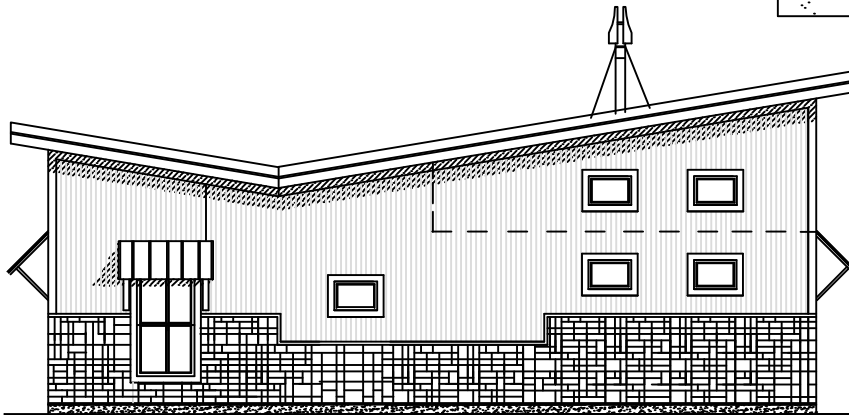


FIRESKY

SEDWICK HOUSE 1120 sq ft



ONE-STORY HOUSE WITH OPEN KITCHEN/LIVING
DINING SPACE WITH VAULTED CEILING AND
TRANSOM WINDOWS

HOUSE DATA

SQUARE FOOTAGE: 1120 SF
BEDROOMS: 2
BATHROOMS: 1

OPTIONS

WINDOWS
EXTERIOR MATERIALS
SIDE SCREEN PORCH
SLEEPING LOFT
BASEMENT/WALK-OUT

PASSIVE SOLAR CONTROL

ALL RIGHTS RESERVED ON ALL MATERIAL, FLOOR PLANS AND RENDERINGS CONTAINED THEREIN, AND ON ALL MATERIAL PRODUCED BY FIRESKY MODERN RURAL HOUSES, INCLUDING THE RIGHT OF REPRODUCTION OR USE, IN WHOLE OR IN PART, IN ANY FORM OF ANY FLOOR PLAN OR HOUSE DESIGN WITHOUT THE PRIOR WRITTEN PERMISSION OF FIRESKY MODERN RURAL HOUSES,