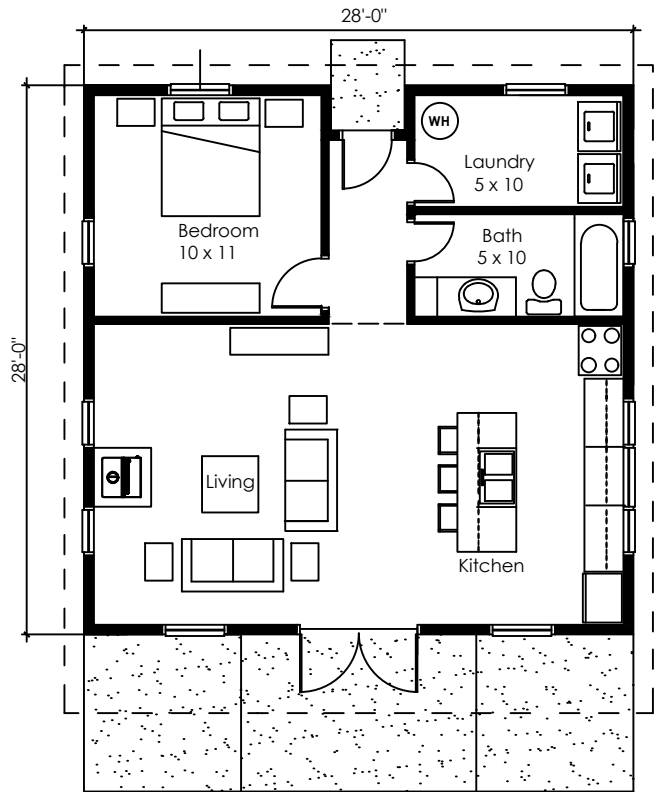
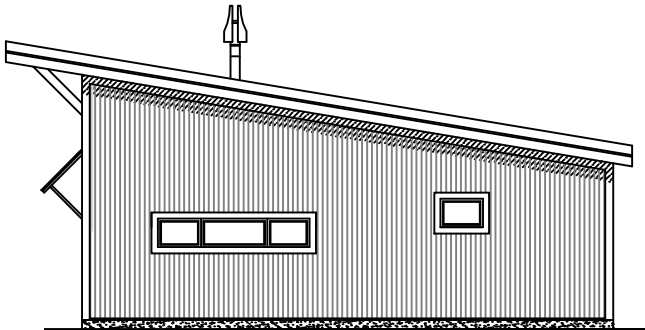
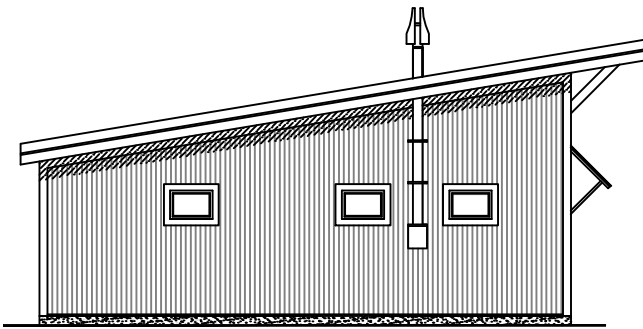
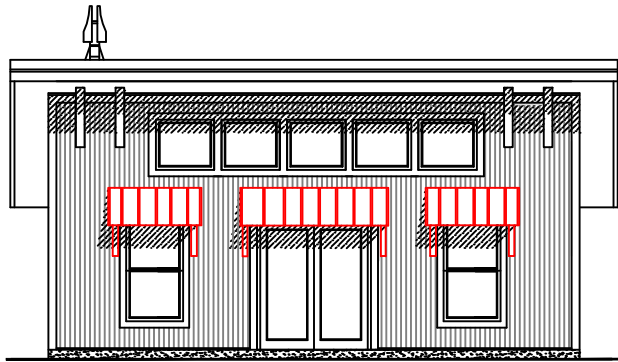


FIRESKY

SKYLAR HOUSE 784 sq ft



ONE-STORY HOUSE WITH OPEN KITCHEN/LIVING
DINING SPACE WITH VAULTED CEILING AND
TRANSOM WINDOWS

HOUSE DATA

SQUARE FOOTAGE: 784 SF

BEDROOMS: 1

BATHROOMS: 1

OPTIONS

WINDOWS

EXTERIOR MATERIALS

EXTERIOR COLORS

SIDE SCREEN PORCH

BASEMENT/WALK-OUT

PASSIVE SOLAR CONTROL

ALL RIGHTS RESERVED ON ALL MATERIAL, FLOOR PLANS
AND RENDERINGS CONTAINED THEREIN, AND ON ALL
MATERIAL PRODUCED BY FIRESKY MODERN RURAL
HOUSES, INCLUDING THE RIGHT OF REPRODUCTION OR
USE, IN WHOLE OR IN PART, IN ANY FORM OF ANY FLOOR
PLAN OR HOUSE DESIGN WITHOUT THE PRIOR WRITTEN
PERMISSION OF FIRESKY MODERN RURAL HOUSES,