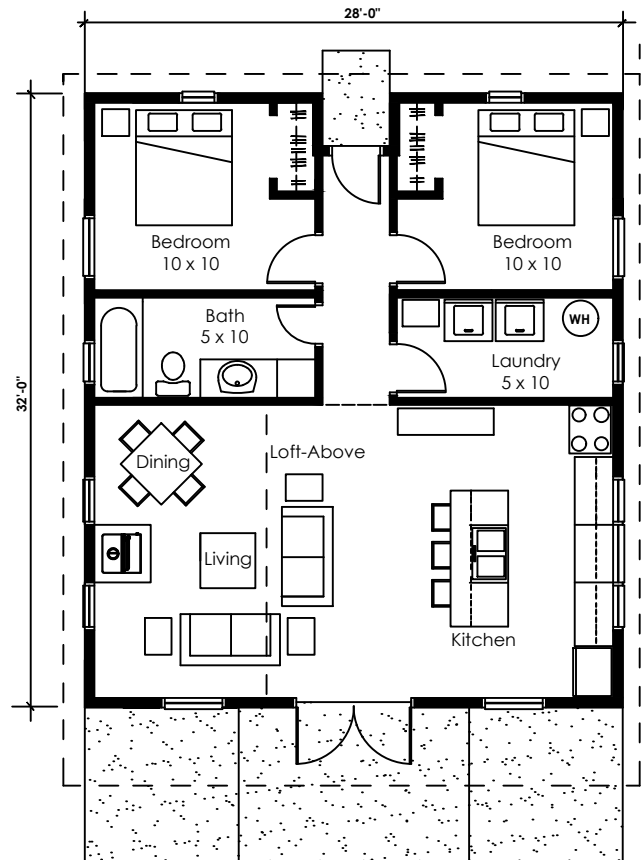
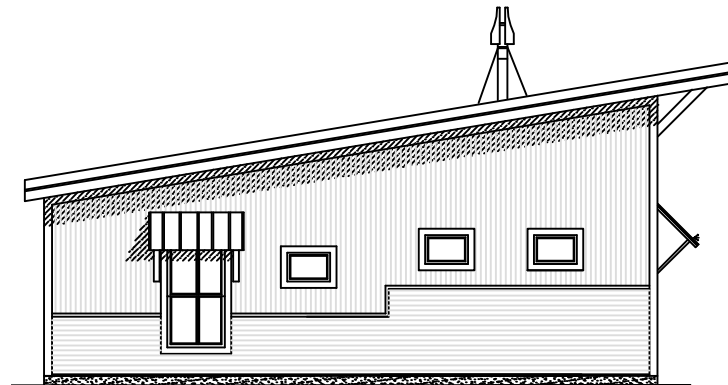
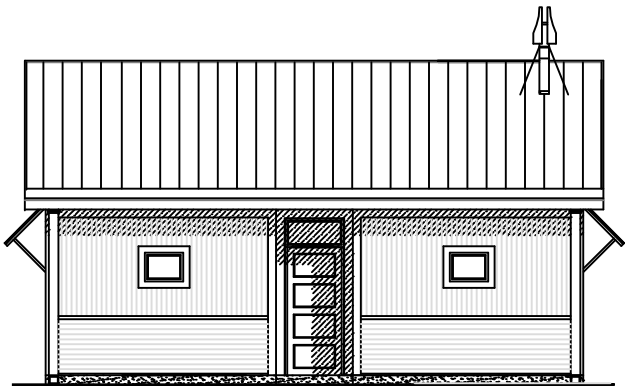
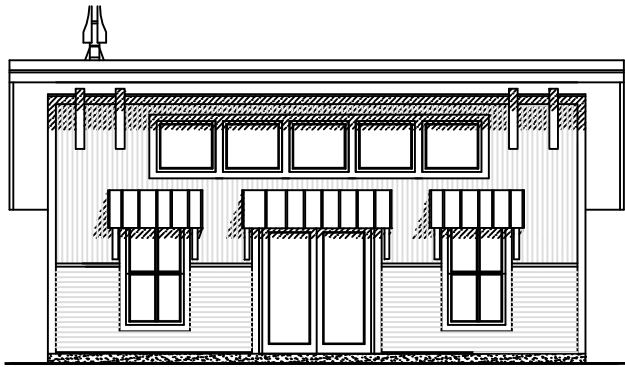


FIRESKY

STRONG HOUSE 896 sq ft



ONE-STORY HOUSE WITH OPEN KITCHEN/LIVING DINING SPACE WITH VAULTED CEILING AND TRANSOM WINDOWS

HOUSE DATA

SQUARE FOOTAGE: 896 SF

BEDROOMS: 2

BATHROOMS: 1

OPTIONS

WINDOWS

EXTERIOR MATERIALS

EXTERIOR COLORS

SIDE SCREEN PORCH

BASEMENT/WALK-OUT

PASSIVE SOLAR CONTROL

ALL RIGHTS RESERVED ON ALL MATERIAL, FLOOR PLANS AND RENDERINGS CONTAINED THEREIN, AND ON ALL MATERIAL PRODUCED BY FIRESKY MODERN RURAL HOUSES, INCLUDING THE RIGHT OF REPRODUCTION OR USE, IN WHOLE OR IN PART, IN ANY FORM OF ANY FLOOR PLAN OR HOUSE DESIGN WITHOUT THE PRIOR WRITTEN PERMISSION OF FIRESKY MODERN RURAL HOUSES,